



INDOFINE Chemical Company, Inc.

121 Stryker Lane, Bldg. 30, Suite 1 • Hillsborough, NJ 08844 • U.S.A.

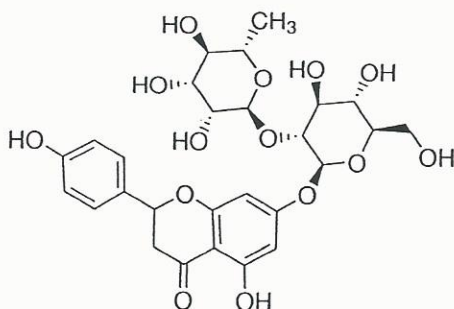
Phone: (908) 359-6778 • FAX: (908) 359-1179

website: www.indofinechemical.com

e-mail: chemical@indofinechemical.com

CERTIFICATE OF ANALYSIS

<u>Catalog Number:</u>	06-020
<u>Product Name:</u>	NARINGIN (Naringenin-7-neohesperidoside)
<u>CAS Number:</u>	[10236-47-2]
<u>Lot Number:</u>	1602738
<u>Molecular Formula:</u>	$C_{27}H_{32}O_{14}$
<u>Molecular Weight:</u>	580.54
<u>Appearance:</u>	Light yellow powder
<u>Loss on Drying:</u>	1.42%
<u>Storage:</u>	Store in a cool, dry place. Keep away from strong light and heat.
<u>Purity(HPLC):</u>	98.61%





INDOFINE Chemical Company, Inc.

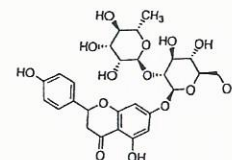
121 Stryker Lane, Bldg. 30, Suite 1 • Hillsborough, NJ 08844 • U.S.A.

Phone: (908) 359-6778 • FAX: (908) 359-1179

website: www.indofinechemical.com

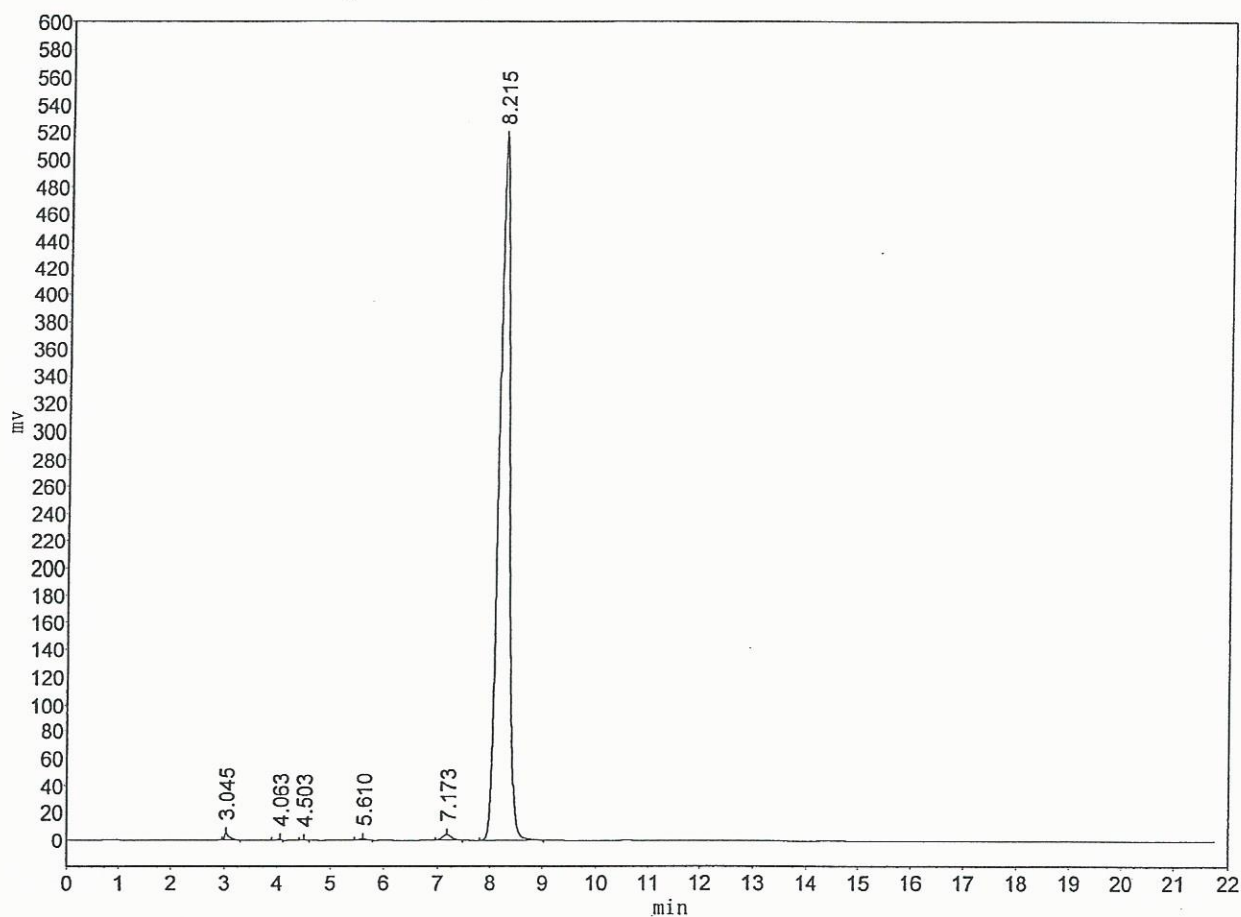
e-mail: chemical@indofinechemical.com

HPLC ANALYSIS



Mobile phase : Acetonitrile - (0.03% H_3PO_4)Water 25:75
Flow rate : 0.8 ml/min
Wavelength : 283nm
Temperature : 25°C

Catalog No.: 06-020
Product Name: Naringin
Lot No.: 1602738



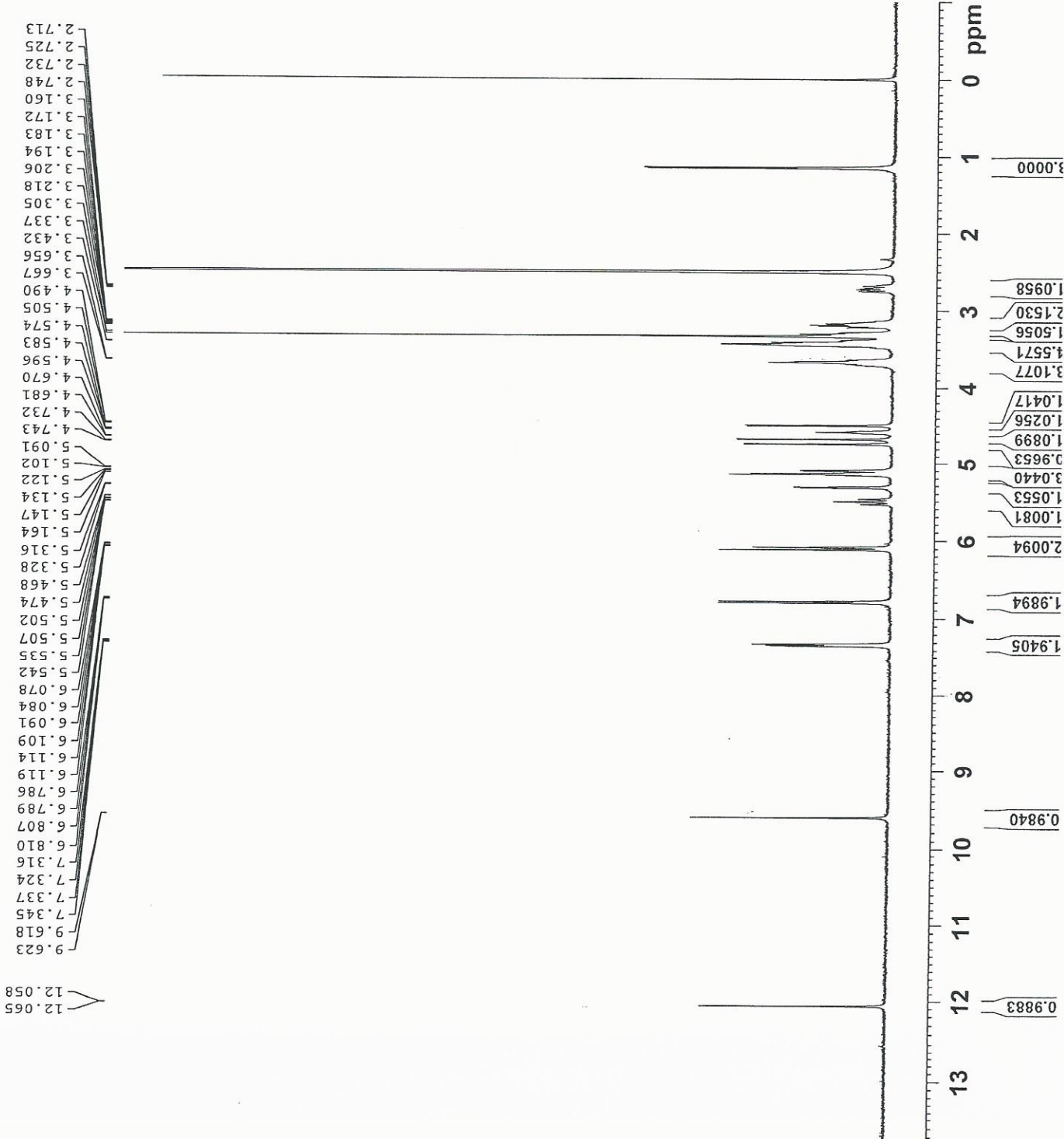
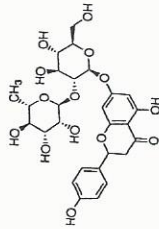
Peak Table

Peak#	RT	Height	Area	%Area
1	3.045	4713.124	33162.352	0.4406
2	4.063	1263.402	6002.500	0.0797
3	4.503	465.460	2739.950	0.0364
4	5.610	1271.130	11890.050	0.1580
5	7.173	4257.036	50288.699	0.6681
6	8.215	516915.125	7422630.000	98.6171
		528885.276	7526713.551	100.0000



INDOFINE Chemical Company, Inc.
 121 STRYKER LANE
 BLDG. 30, SUITE 1
 HILLSBOROUGH, NJ 08844

Catalog No.: 06-020
 Product Name: Naringin
 Lot No.: 1602738



Current Data Parameters
 Name Naringin-H1-DMSO
 EXPNO 10
 PROCNO 1

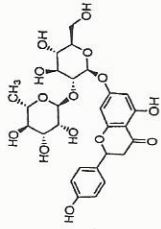
F2 - Acquisition Parameters
 Date_ 20160223
 Time_ 21.17
 INSTRUM spect
 PROBHD 5 mm PABBO BB/
 PULPROG zg30
 TD 65536
 SOLVENT DMSO
 NS 16
 DS 2
 SWH 8223.685 Hz
 FIDRES 0.125483 Hz
 AQ 3.9846387 sec
 RG 157.41
 DW 60.800 usec
 DE 6.000 usec
 TE 294.2 K
 D1 1.00000000 sec
 TDO 1

***** CHANNEL f1 *****
 NUC1 1H
 P1 12.80 usec
 PLW1 15.8489998 W
 SF01 400.1632013 MHz

F2 - Processing parameters
 SI 65536
 SF 400.1600020 MHz
 WDW EM
 SSB 0
 LB 0
 GB 0
 PC 1.00



INDOFINE Chemical Company, Inc.
 121 STRYKER LANE
 BLDG. 30, SUITE 1
 HILLSBOROUGH, NJ 08844



Catalog No.: 06-020
 Product Name: Naringin
 Lot No.: 1602738

7.345
7.337
7.324
7.316

6.810
6.807
6.789
6.786

6.119
6.114
6.109
6.091
6.084
6.078

5.542
5.535
5.507
5.502
5.474
5.468
5.328
5.316
5.164
5.147
5.134
5.122
5.102
5.091



Current Data Parameters
 NAME Naringin-H1-DMSO
 EXPNO 10
 PROCNO 1

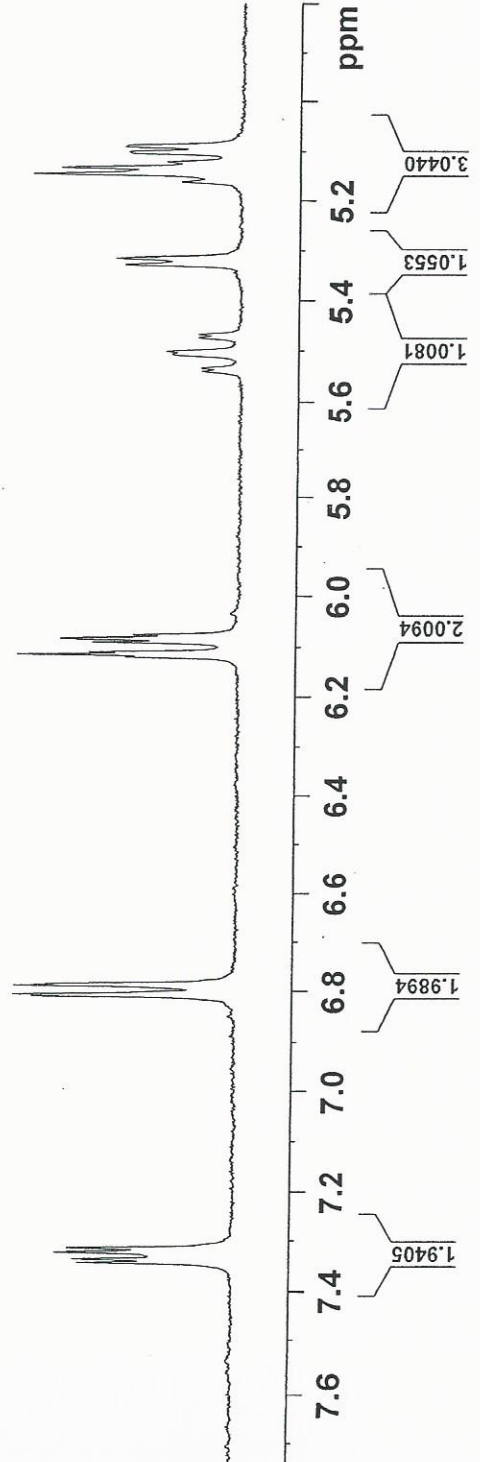
F2 - Acquisition Parameters

Date 20160223
 Time 21.17
 INSTRUM spect
 PROBHD 5 mm PABBO BB/
 PULPROG zg30
 TD 65536
 SOLVENT DMSO
 NS 16
 DS 2
 SMH 8223.685 Hz
 FIDRES 0.125483 Hz
 AQ 3.9846387 sec
 RG 197.41
 DW 60.800 usec
 DE 8.00 usec
 TE 294.2 K
 D1 1.00000000 sec
 D11 1

***** CHANNEL f1 *****
 NUC1 1H
 P1 12.00 usec
 PLW1 15.8489699 W
 SF01 400.1632013 MHz

F2 - Processing Parameters

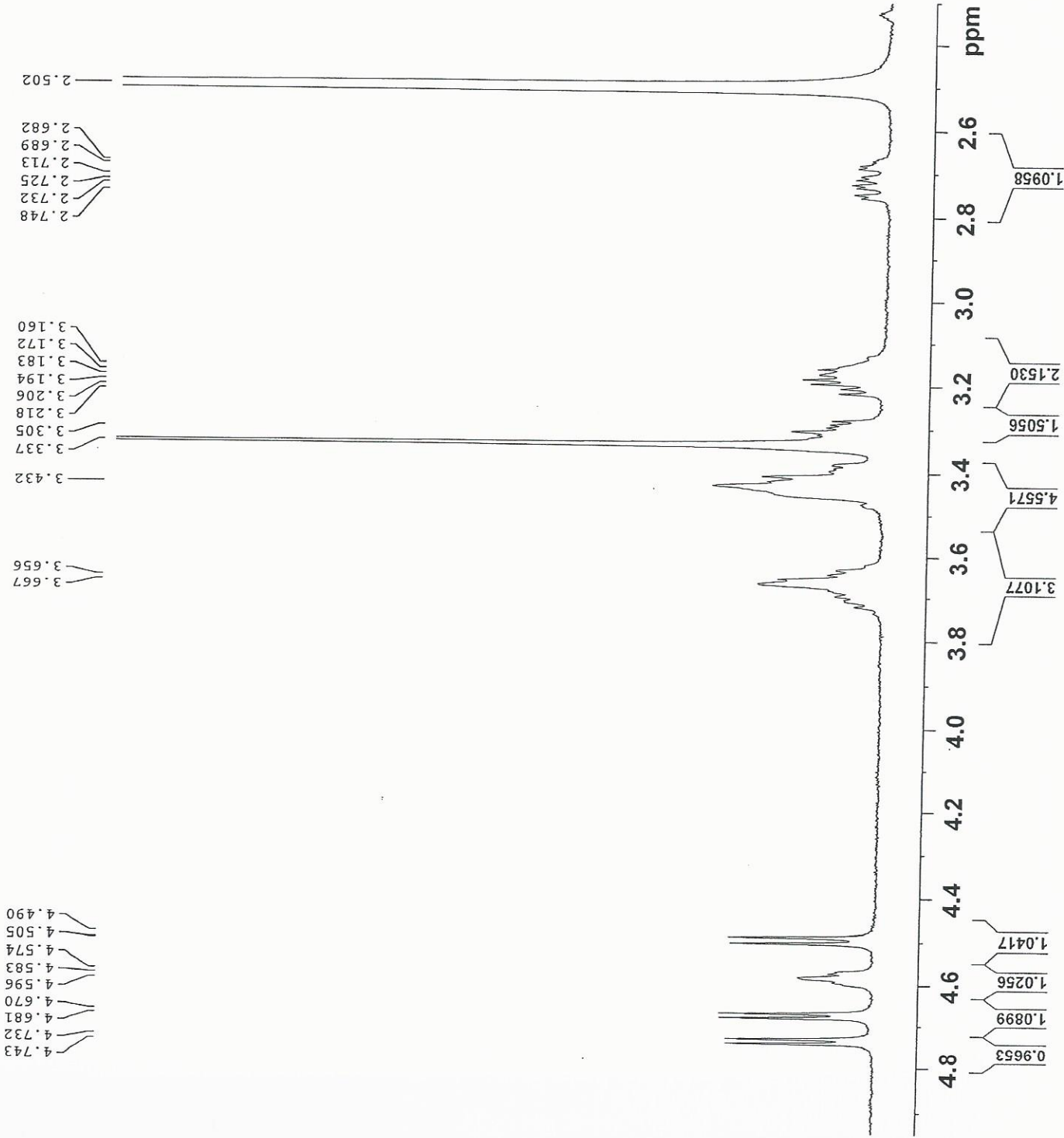
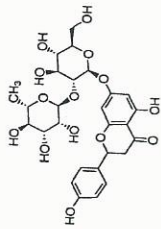
SI 65536
 SF 400.1600020 MHz
 MDW EM
 SSB 0
 LB 0.30 Hz
 GB 0
 PC 1.00





INDOFINE Chemical Company, Inc.
 121 STRYKER LANE
 BLDG. 30, SUITE 1
 HILLSBOROUGH, NJ 08844

Catalog No.: 06-020
 Product Name: Naringin
 Lot No.: 1602738



Current Data Parameters
 NAME Naringin-H1-DMSO
 EXPNO 10
 PROCNO 1

F2 - Acquisition Parameters
 Date_ 20150223
 Time_ 21.17
 INSTRUM spect
 PROBD 5 mm PABBO BBI/
 PULPROG zgpg30
 TD 65536
 SOLVENT DMSO
 NS 16
 DS 2
 SWH 8223.685 Hz
 FIDRES 0.125483 Hz
 AQ 3.9846387 sec
 RG 197.41
 DW 60.800 usec
 DE 8.00 usec
 TE 294.2 K
 D1 1.0000000 sec
 TDO 1

***** CHANNEL F1 *****
 NUC1 1H
 P1 12.80 usec
 PLW1 15.84899998 W
 SFO1 400.1632013 MHz

F2 - Processing parameters
 SI 65536
 SF 400.1600020 MHz
 WDW EM
 SSB 0
 LB 0.30 Hz
 GB 0
 PC 1.00